

Modern

Product Specifications



Application

Upholstery

Material Composition

Surface - 100% Silicone

Backing - Polyester

Dimensions

Width - 54 inches

Thickness - 0.8 mm

Sustainability

PU and PVC free

Ultra low VOCs

Recyclable

RoHS, REACH, California PROP 65 compliant

CAL 01350 compliant

Advanced solvent free technology

No toxic by-products

No formaldehyde

No plasticizers, phthalates, heavy metals, or BPA

No harm to air or water

Colorfastness

Light fastness – AATCC16.3, 200h, Grade 4

Crocking – AATCC8, Wet & Dry, Class 5

Perspiration – AATCC15, Class 5

Stain Resistance

Ink CFFA-141, Class 5

Permanent Marker CFFA-141, Class 5

Coffee CFFA-141, Class 5

Blood/Urine/Betadine CFFA-141, Class 5

Mustard/Wine CFFA-141, Class 5

Lipstick CFFA-141, Class 5

Physical Performance

Wyzenbeek abrasion, 150,000+ double rubs¹

Martindale abrasion, 130,000 cycles

Flex resistance - ASTM D2097-91

Hydrolysis resistance - ASTM D3690-02, 10+ weeks

Cold crack resistance - 5# roller, CFFA-06

Salt spray resistance - ASTM B117, 1000h+

Low-temp flex resistance - ISO17694, -30 °C 200000+

¹Multiple factors affect fabric durability and appearance retention, including end-user application and proper maintenance. Wyzenbeek results above 100,000 double rubs have not been shown to be an indicator of increased lifespan.

Inherent Flame Resistance

CA TB117-2013

FMVSS #302

IMO A.652(16) Part 8

BS5852 #0, 1, 5

NFPA 260 Class I

UFAC Class I

EN 1021 Part I and II

Health Conscious Benefits

Inherently anti mildew, ASTM G-21

Skin friendly & allergen free

No anti-bacterial additives or biocides

Cleaning & Maintenance

Cleaning code - W/S

Bleach cleanable - 1:4

Detergent cleanable - 1:70



ACT® Registered Certification Marks*

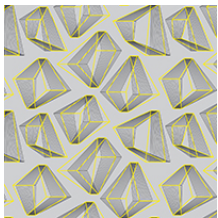
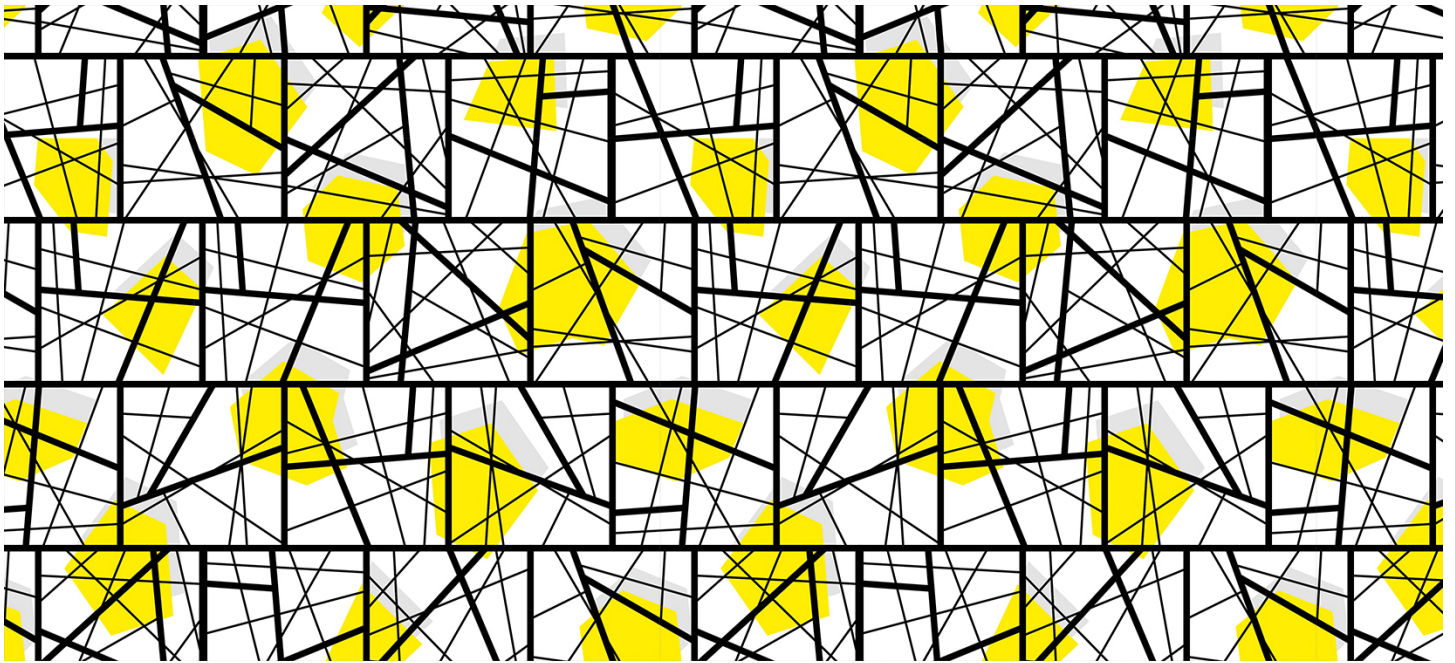


Sileather™ silicone fabrics qualify for these environmental and green building programs:

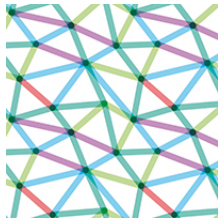
Leed V4, BREEAM, ILFI Living Building Challenge, CA Section 01350, CHPS, US EPA – Federal Purchasing

Modern

Product Specifications



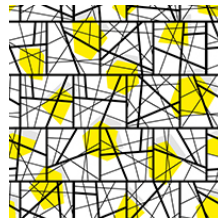
ST0009



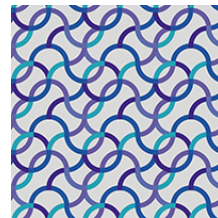
ST0015



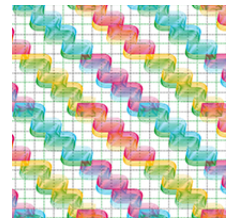
ST0024



ST0025



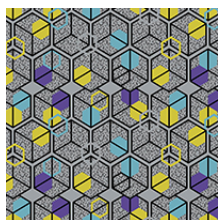
ST0029



ST0031



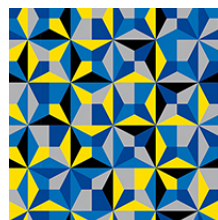
ST0051



ST0052



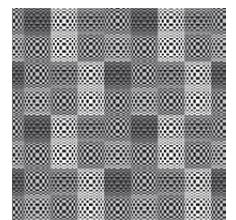
ST0059



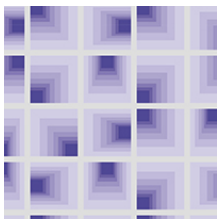
ST0068



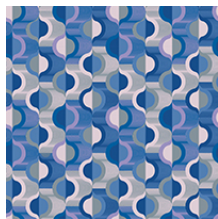
ST0072



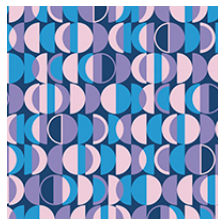
ST0080



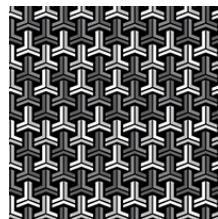
ST0081



ST0085



ST0086



ST0105